

**RESILIENCE. RECOVERY. REFORM.**

Your partner beyond the crisis.

**GET STARTED**

SUBSCRIBE

# INSIDEHOUSING

[Login](#) | [Register](#)

## Calls for social landlords to prioritise letting to domestic abuse survivors during pandemic

NEWS 15/05/20 BY LUCIE HEATH


Domestic abuse agencies are demanding social housing providers to prioritise survivors when allocating homes, amid reports that incidences of abuse are rising during the coronavirus lockdown.



Picture: Getty

### Sharelines

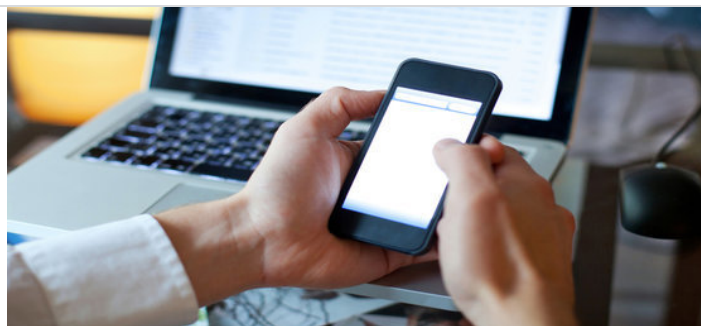
 “The severity of the calls we receive since the coronavirus outbreak is unlike anything we’ve seen before,” said [@homefinderuk](#) [#ukhousing](#)

 “Urgent planning and preparation is needed now to effectively address the current need and anticipated increase in demand for housing once lockdown lifts,” said [@DAHAlliance](#) [#ukhousing](#)

Safer London, Homefinder UK and the Domestic Abuse Housing Alliance (DAHA) are leading the call to action, with support from the National Housing Federation, National Federation of ALMOs and a number of leading domestic abuse charities.

Alongside prioritising domestic abuse survivors in social housing lettings, the organisations are calling on landlords to support refugees by offering move-on accommodation.





NEW TO *INSIDE HOUSING*? [CLICK HERE TO REGISTER AND RECEIVE OUR DAILY NEWSLETTER STRAIGHT TO YOUR INBOX](#)

Already have an account? [Click here](#) to manage your newsletters

[Allocations](#) [Care and support](#) [Coronavirus](#) [Housing Association/RP](#)  
[Housing Management](#) [Local Authority](#)



Add New Comment  
You must be logged in to comment.

#### RELATED STORIES



**How to support those experiencing domestic violence during the lockdown**



**A week in the life of... a senior lettings officer**



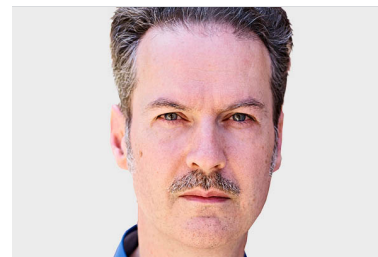
**Coronavirus outbreaks in one in three care homes in England**



**Homelessness charities to receive £6m from government's charity support package**



**L&Q's surplus stabilises but completions fall 15%**



**The pandemic is a challenge to current practices of development**

- [About us](#)
- [Subscribe](#)
- [Contact us](#)
- [Digital editions](#)
- [Email alerts](#)
- [Forward features](#)
- [How to pitch features](#)
- [How to pitch comment pieces](#)

- [Privacy statement](#)
- [Cookie Policy](#)
- [Corporate subscriptions](#)
- [Sponsored content](#)
- [Subscriptions terms and conditions](#)
- [General Terms and conditions](#)
- [Sitemap](#)

For general enquiries you can contact Inside Housing at:

3rd Floor, 4 Harbour Exchange Square, Isle of Dogs, London, E14 9GE

Tel: 0207 772 8300

© 2020 Inside Housing  
All rights reserved



